

Preparation Before Using DJI Terra

Before using DJI Terra for the first time, manually upgrade the following Phantom 4 Series drones via DJI Assistant 2 For Phantom: Phantom 4 Pro, Phantom 4 Advanced, Phantom 4 RTK, and Phantom 4 Pro V2.0 Series. In some cases, drivers for the remote controller may be required for some PCs.

Aircraft Firmware Upgrade

Download DJI Assistant 2 For Phantom at the link below:

<https://www.dji.com/phantom-4-pro-v2/info#downloads>

PHANTOM 4 PRO V2.0 DOWNLOADS

Home / Products / Phantom 4 Pro V2.0 / Downloads

DOCUMENTS & MANUALS

- Phantom 4 Pro/Pro+ V2.0 Release Notes 2018-10-24 PDF
- Phantom 4 Pro/Pro+ Series User Manual v1.0 2018-05-09 PDF
- Phantom 4 Pro V2.0 Quick Start Guide 2018-05-17 PDF
- Phantom 4 Pro+ V2.0 Quick Start Guide 2018-05-17 PDF
- Phantom 4 Series Disclaimer and Safety Guidelines 2018-05-08 PDF
- Phantom 4 Pro V2.0 in the Box 2018-05-08 PDF
- Phantom 4 Pro+ V2.0 in the Box 2018-05-08 PDF
- Phantom 4 Series Intelligent Flight Battery Safety Guidelines 2018-05-08 PDF

SOFTWARE

- DJI Assistant 2 For Phantom Release Note 2019-03-15 PDF
- DJI Assistant 2 For Phantom V2.0.7 2019-03-15 PDF**
- DJI Assistant 2 For Phantom V2.0.6 2018-10-28 DMG

FIRMWARE

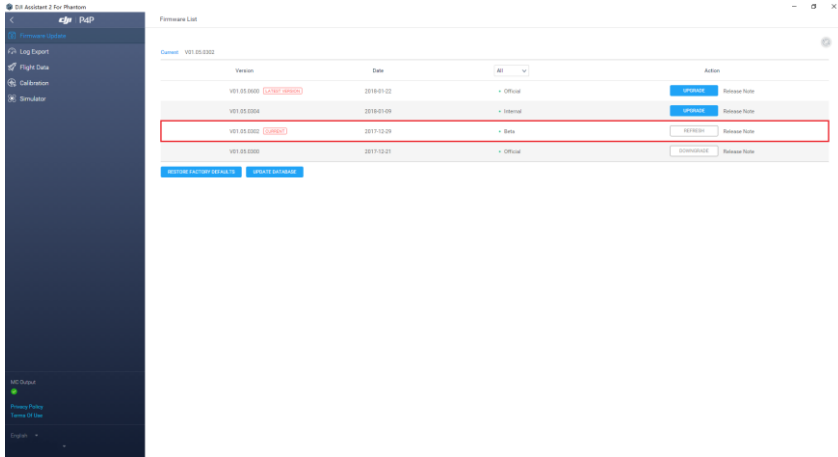
- Phantom 4 Pro+ V2.0 Remote Controller Firmware V01.003.00 2018-10-26 PDF
- How to Update Phantom 4 Pro+ V2.0 Remote Controller Firmware 2018-06-14 PDF

Firmware Upgrade

Open DJI Assistant 2 For Phantom, log in with an authorized account, connect your Phantom 4 Series aircraft with PC by using a Micro USB cable, and upgrade the corresponding firmware version for the aircraft.

NOTE: Phantom 4 Pro and Phantom 4 Advanced should be upgraded via a specific beta version (please refer to the below pictures). All other aircrafts must be upgraded to the latest version.

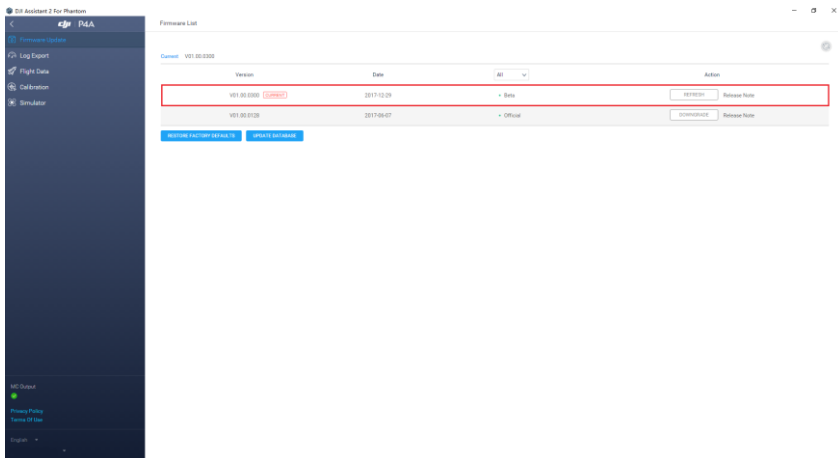
Phantom 4 Pro (Beta) Version V01.05.0302



The screenshot shows the 'Firmware List' interface in DJI Assistant 2 for Phantom. The current firmware is V01.05.0302. The table lists several versions with their release dates and types. The version V01.05.0302 (Beta) is highlighted with a red border. Below the table are buttons for 'INSTALL FIRMWARE (Beta V0)' and 'UPDATE FIRMWARE'.

Version	Date	Type	Action
V01.05.0300 (Official)	2018-01-22	Official	UPDATE Release Note
V01.05.0304	2018-01-09	Internal	UPDATE Release Note
V01.05.0302 (Beta)	2017-12-29	Beta	UPDATE Release Note
V01.05.0300	2017-12-29	Official	Download Release Note

Phantom 4 Advanced (Beta) Version V01.00.0300



The screenshot shows the 'Firmware List' interface in DJI Assistant 2 for Phantom. The current firmware is V01.00.0300. The table lists several versions with their release dates and types. The version V01.00.0300 (Beta) is highlighted with a red border. Below the table are buttons for 'INSTALL FIRMWARE (Beta V0)' and 'UPDATE FIRMWARE'.

Version	Date	Type	Action
V01.00.0300 (Beta)	2017-12-29	Beta	UPDATE Release Note
V01.00.0328	2017-08-07	Official	Download Release Note



Download and Install DJI Terra

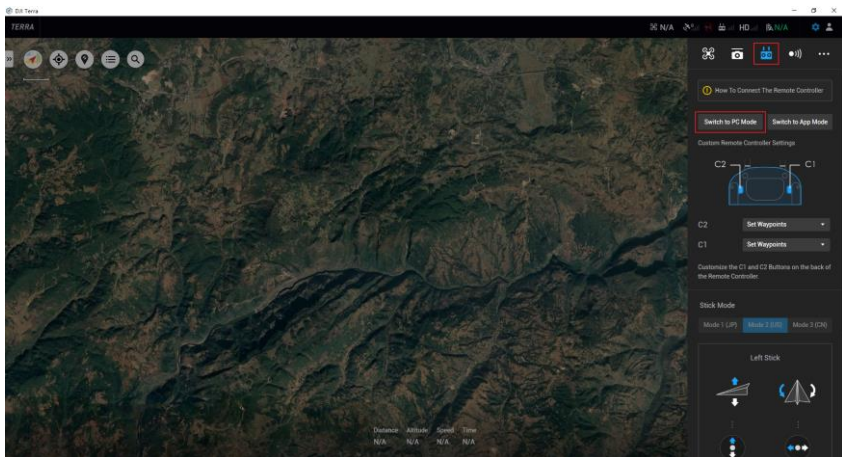
Download DJI Terra at the link below:

<https://www.dji.com/dji-terra/info#downloads>

Remote controller mode switching

Users of the Phantom 4 RTK or Phantom 4 Pro V2.0 Series can skip this step. All other Phantom 4 Series users are required to follow the steps below:

1. Close DJI Assistant 2 For Phantom, open DJI Terra and login your DJI account.
2. Turn on the remote controller, use a Micro USB cable (Android charging cable) to connect the remote controller (Micro USB port) with a computer (USB port).
3. Enter  >  on DJI Terra, select "Switch to PC Mode" .



4. Remove the Micro USB cable and restart the remote controller.

Install Remote Controller Driver

While using DJI Terra, some remote controllers may require you to install the corresponding driver.

Phantom 4 Pro V2.0/Phantom 4 Pro + V2.0/Phantom 4 RTK remote controller

NOTE:

When using Phantom 4 Pro V2.0, please make sure to connect the remote controller with the PC first, then turn on the remote controller. Otherwise, DJI Terra cannot recognize the device.

For Phantom 4 Pro + V2.0 and Phantom 4 RTK, if there is no image transmission window shown on the map, you need to install a driver.

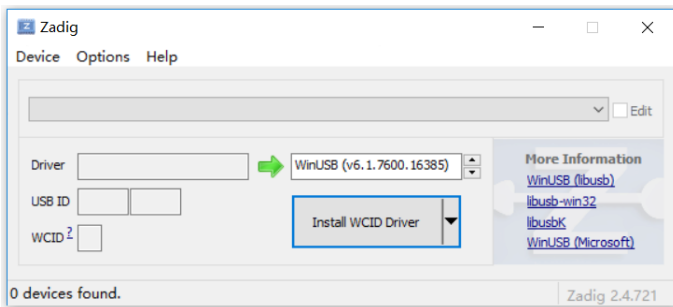
1. Download and install the driver.

<https://github.com/pbatard/libwidi/releases/download/b721/zadig-2.4.exe>

2. Switch on Phantom 4 RTK remote controller, using USB-C cable to connect remote controller with the PC (Phantom 4 Pro + V2.0 using Micro USB cable).

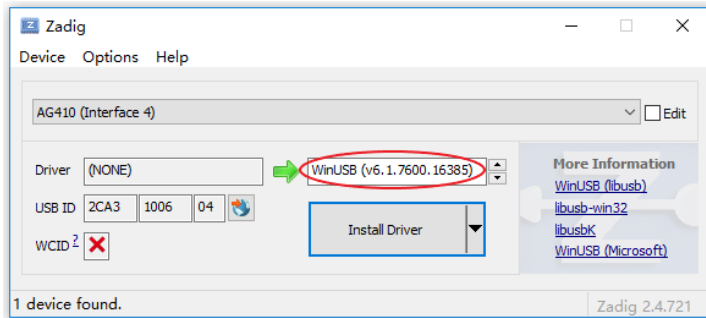
3. Run zadig-2.4.exe.

4. Click **Options > List All Devices**



5. Select **AG410 (Interface 4)** under the drop down list.

6. Select **WinUSB** on the right side of green arrow, then click **Install Driver**.



7. The driver will be successfully installed.

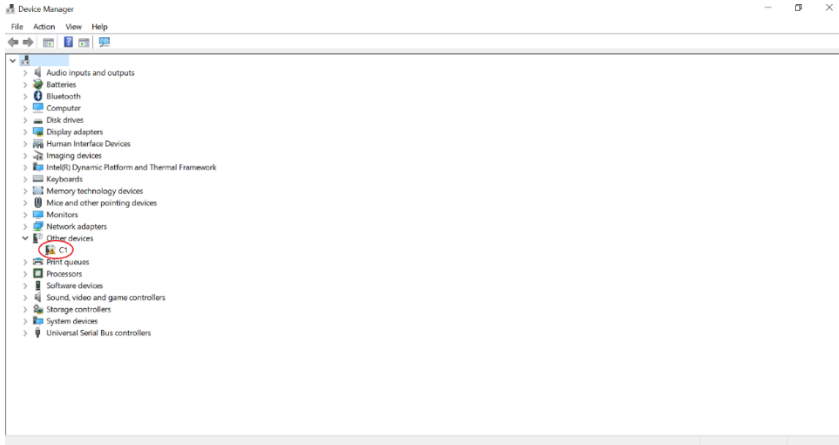
8. Restart DJI Terra.

Phantom 4 Pro / Phantom 4 Advanced remote controller

Please refer to the following steps to check if the driver for the remote controller is properly installed.

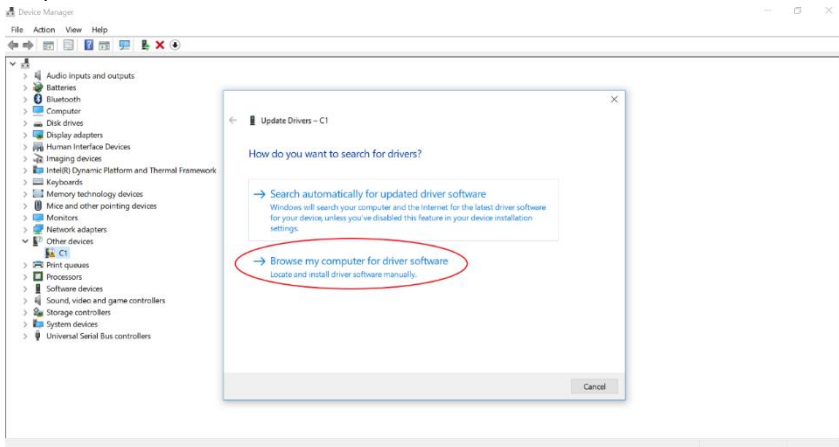
How to Check the driver:

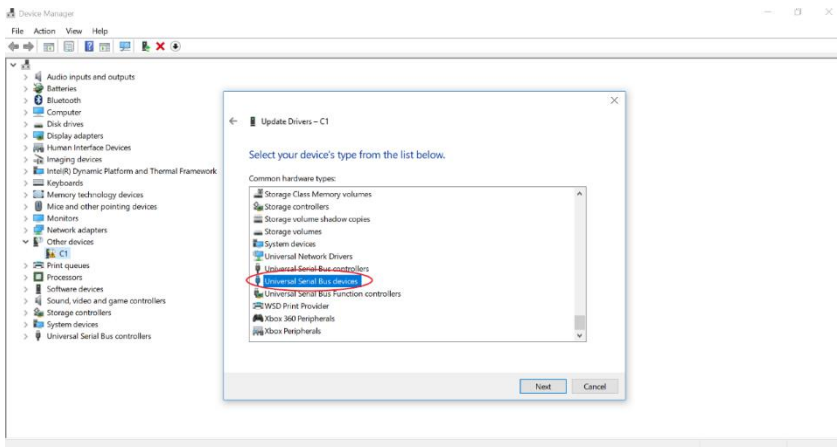
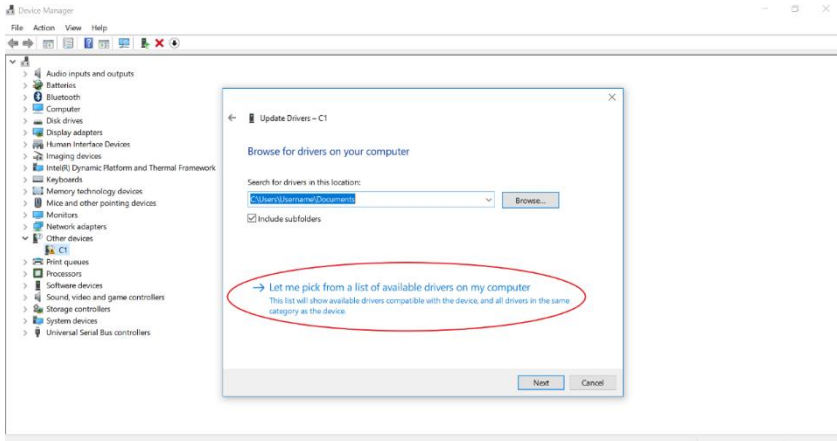
1. Use a double USB cable to connect the remote controller with the PC.
2. Go to Device Manager; the C1 device with the exclamation mark indicates a driver problem, meaning you need to install the driver. If there is no exclamation mark, you can skip the following steps.

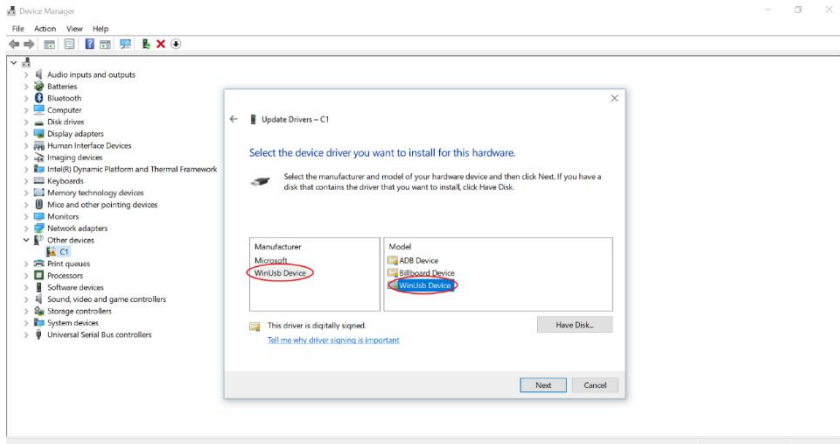


Install driver

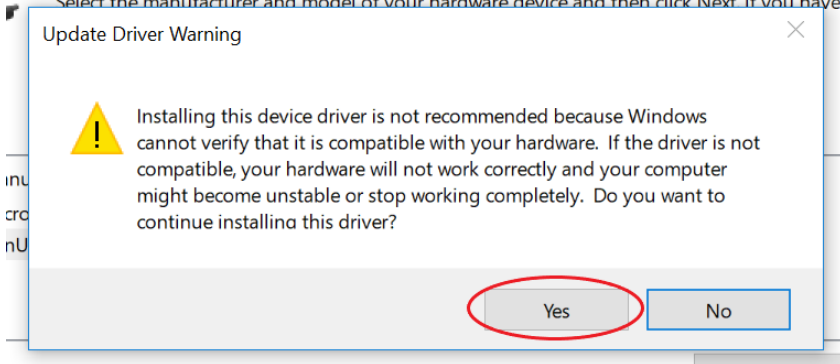
1. Right click the C1 device and select update driver, then follow the steps illustrated in the pictures below.







Select the manufacturer and model of your hardware device and then click Next. If you have



2. Once the driver is installed, the exclamation mark will disappear and DJI Terra is ready to use.

